

Matthews Wife

v.  $\frac{3}{4}$  Decree.

Wife and others

By consent of parties, this cause came on to be heard this day, upon the bill, answer and Exhibits, and the argument of counsel; whereupon the court doth order, adjudge and decree, that the commissioners, hereinafter named, assisted by a competent surveyor, do lay off and assign to Alice the wife Alice, one third of the land, of which she in the proceedings mentioned, suing to her the manor house, and her said dower in the land in this county, if the same can be so assigned, with due regard to the interest of the heirs of the said Thomas dec<sup>d</sup>; - either otherwise, to lay off, and assign the same to her, in either of the said tracts, as they may think fit. And that <sup>the</sup> same commissioners also, assign to the said Alice her dower in the slaves, of which her said husband died possessed, and the other personal estate. And the court doth further order, adjudge and decree, that said wife William L. Title, adm<sup>r</sup> as aforesaid, after the said Alice shall have received her dower, both in it's real and personal estate in the said proceedings mentioned, do sell the residue, upon a credit of twelve months, taking bond with good security from the purchasers, and that he sell the land in such lots and parcels, as will, in his judgement, be most conducive to the interest of all concerned. And the court doth further order adjudge and decree, that the said wife Title, do divide the same into seven equal parts, and give one part

In the worshipful County Court of Brunswick in Chancery, sitting  
Humbly complaining sheweth to your worshipps, your orator and oratrix  
William Matthews and Rebecca his wife.

Humbly complaining sheweth to your worshipps, that Thomas Taylor,  
late of this County, and father of your oratrix, departed this life some  
time since, leaving a considerable real and personal estates, intestate  
and leaving your oratrix, John Taylor, David Taylor, Benjamin Taylor,  
Susanna Bennett, (who was then married to Benjamin Bennett,) the  
heirs & distributees of Wm Taylor dec<sup>d</sup>, (who are John, Stirling, Francis,  
Benjamin, Thomas, William, Susan and Jones Taylor,) and the heirs  
of Jones Taylor dec<sup>d</sup>, (who are Lucy, Sally, and Herbert Taylor his heirs and  
distributees; - and also, he left Alice Taylor his widow; - and William  
S. Hite has qualified, in this court as the adm<sup>r</sup>, on the estate of the  
said Thomas dec<sup>d</sup>. That the said intestate left seven slaves, and two  
tracts of land; - one lying in the County of Middleburg, and the  
other, lying both in the counties of Brunswick, and Lunenburg,  
besides stock, household, and kitchen furniture &c. That, the said  
two tracts of land when divided, between all the several distributees,  
entitled to the same, will not amount to the sum of three hundred  
dollars to each share, and that the slaves, cannot be divided in  
kind; - That your orator and oratrix, are advised that the said  
Alice, the widow of the said Thomas, dec<sup>d</sup> is entitled, by the laws of  
this Comm<sup>on</sup>wealth to one third part of said estate, both real &

personal, of which the said Thomas did seized and possessed; that the administrative transactions of the said William S. Hite, are sufficiently complete to authorize an adjustment, and division of all the affairs of the said estate. But now so it is, it please your worships that your orator and oratrix, are unable to get any division of the said estate, without the aid of a court of Equity.

In Tender consideration whereof, and for as much as your orator and oratrix are without remedy, except in a court of Chancery, to the end, therefore, that justice may be done, they pray, that the said Wm S. Hite, and as aforesaid, Aline Taylor, widow of the said Thomas dec<sup>d</sup>. John Taylor, David Taylor, Benj Taylor, and Benj Bennett & Susanna his wife; and the said heirs and distributees of William and Jones Taylor dec<sup>d</sup>, who were children of the said Thomas, may be made defendants to this bill, and to the matters & charges therein contained may full true answer, make; that your worships will, order and decree in the first place, that dower of the said Aline, may be laid off and allotted to her according to law, that the account of the said Wm S. Hite, may be settled under the authority of this court; - that the remaining slaves, after the dower aforesaid is taken out be sold on such terms as your worships shall think best, together with the said two tracts of land, exclusive of dower, and the proceeds thereof, divided amongst the said Thomas's legal heirs and distributees; as also whatever may remain in the hands of the said widow after paying debts and just charges, and that your

decrees will make such other and further decree in the premises as to you may seem just and equitable, between the parties. And your avowed Solicitors will forever pray, &c

The joint answer of William L. Kite adm<sup>r</sup> of Thomas Taylor dec<sup>d</sup>, Alice Taylor, widow of the said Thomas, John Taylor, David Taylor, Benj. Taylor, Benjamin Bennett and Susanna his wife, formerly Susanna Taylor, and John, starting, Frances, Benjamin, Thomas, William, Susan, and Jones Taylor children theirs of W<sup>m</sup> Taylor dec<sup>d</sup> and Lucy, Sally and Herbert Taylor, children and heirs of Jones Taylor dec<sup>d</sup>, all being the heirs and distributees of the said Thomas, the elder dec<sup>d</sup> to a bill of complaint, exhibited in this court, against them, by William Matthews and Rebecca, his wife.

Your Respondents, saving &c for answer say, that the facts set forth and stated in the complainants bill, are true; and that they cannot give, or see any good reason, why the said estate should not be disposed of, as the complaints have asked; - and that they have no objection to the court's making any decree in the matter, which may be thought equitable and just. and having answered the complaints bill, pray to be dismissed hence with their costs, &c

thereof to the com<sup>ts</sup> William Meentzen, in right of his wife Susanna  
one other part, to the child John Taylor; - one other part, to David Taylor;  
one other part, to Benjamin Taylor; - one other part, to Benjamin  
Bennett, in right of his wife Susanna; and that he divide one part  
thereof into three equal parts; and ap<sup>pr</sup> one thereof, the child, Lucy  
Taylor; - one other part thereof to the child Sally Taylor; and the other  
remaining third part to the child Herbert Taylor, in right of their  
father Jones Taylor dec<sup>d</sup>. one of the children & heirs of the said Thomas  
and that he divide the remaining one seventh part into eight equal  
parts, and ap<sup>pr</sup> one equal part thereof to each of the said children of  
the said William dec<sup>d</sup>, in right of their said father, who was also one  
of the children & heirs of the said Thomas dec<sup>d</sup>. And the court doth  
further order adjudge and decree, that the same commissioners, as  
soon as the proceedings are sufficiently matured, render their decree, do  
state and settle the account of the said of fl<sup>ts</sup> Hite, as adm<sup>r</sup> of the  
said Thomas, that Gray & Dunn, John D. Wilkins, Benjamin Strong,  
and <sup>J<sup>rs</sup> William</sup> Col. Brown, or any three of them, be appointed the com<sup>rs</sup> & hon<sup>rs</sup>  
of this court, to carry this decree into execution. And the court doth  
further order adjudge & decree that the said adm<sup>r</sup> pay the expenses of  
this suit out of the funds of the sales in his hands to be adm<sup>str</sup>,  
and that the expenses thereof be equally divid<sup>d</sup> between the parties.  
But neither party are to have the benefit of this decree until they  
shall or will give bonds & security to the satisfaction of the

said commissioners, <sup>to the said adm<sup>r</sup></sup> conditioned to refund to him their respective proportions of any debts which may hereafter come against the said estate.\*

And that the same commissioners and the said adm<sup>r</sup> make up of their proceedings under this decree, to this court, with any matter specially stated, deemed pertinent by themselves, or which may be required so to be stated, by either party.

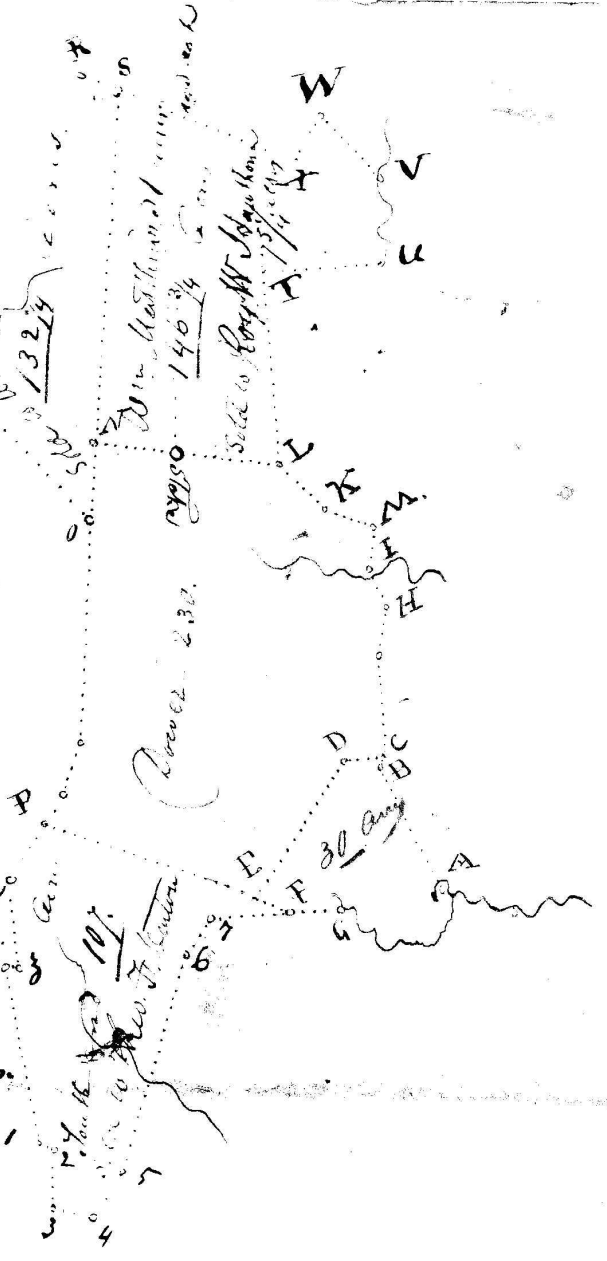
\* and also shall have rendered to the said <sup>commissioners</sup> an accurate & just account on oath of all & every advancement which he she or they may have received from the <sup>said</sup> intestated Thomas in his life time.

30 Aers To John Taylor  
 230 To Mrs. Anne Taylor as above  
 132 1/4 aers in sum total  
 146 3/4 Acres Brunsell  
 539  
 107  
 646 To be seized for the estate

11th day of December 1821  
 Surveyed for the Estate of  
 Thomas Taylor Deceased  
 646 aers of Land, lying  
 in the County of Brunswick  
 = With and Lunenburg &  
 divided the same as  
 directed by William L.  
 Hite, Adm. & Commissioners  
 and three others, for the purpose  
 of dividing the Power.  
 which will hereafter be  
 shown. See to Eff.

30 Aers to John Taylor by said Hite. Beginning  
 at a Corner Maple on a bank in Benjamin  
 Grangers line at or thence N 42 1/2 W 80 poles to Side line  
 pin at B thence N 6 E 8 poles to a ~~corner~~ <sup>pointers</sup> at C.  
 thence a new line S 22 W 40 poles to a ~~corner~~ <sup>Spanish oak</sup> at D.  
 thence S 31 W 6 poles to a ~~corner~~ <sup>pointers</sup> at  
 20 poles to Grangers Corner pin at F. thence S 72 E  
 to head of a ~~stream~~ <sup>at E</sup> thence N 81 E 27 poles  
 meanders to the beginning.

Thence 230 aers to ~~John Taylor~~ <sup>John Taylor</sup> Parcel to said  
 decedent which includes her Inheritance in all the lands that said  
 Thomas did seized. bounded as follows Viz. Beginning at a  
 pointers ~~Corner~~ <sup>Corner</sup> where John Taylor new line starts, thence  
 a Crooked line to a ~~corner~~ <sup>black oak</sup> at H. thence N 26 W 22 poles  
 to a post oak at I. thence N 1 W 24 1/4 poles to a black oak  
 corner at M. thence N 69 1/2 W 30 poles to a pin at K. thence  
 N 47 W 36 poles to a corner white oak at L.



Thence N 84 1/2 W. 108 poles to a new made corner on Browns with  
line at N. Thence along said line S 3 E 176 poles to bend. Thence a crossed  
line to a ~~white oak~~ on a Ridge path at P. Thence a new line S 72 E 132 poles  
to a ~~point~~ corner on John Taylor at E. Thence the new John Taylors line  
to the beginning.

132 1/4 Acres in Lunenburg bounded as follows Viz.

Beginning at the Brunswick line at S. Thence N 69 W. 26 poles  
to corner ~~point~~, & from thence in John Taylors jr. line at R. Thence  
S 51 W. 174 poles to fall down corner at A. Thence ~~to~~ Frederick Hawthorns  
corner fall down ~~at~~ Thence S 45 E 210 <sup>ft</sup> to Edward B. Shiericants  
fall down corner at O. on the Brunswick line, thence the Brunswick  
line to the beginning.

146 3/4 Acres in Brunswick. bounded as follows. Viz.

Beginning at a post white oak I. Thence N 7 W. 113 poles to a corner  
at pine at T. Thence N 81 E 70 poles to a corner second gum, in  
Ogburns line at a drain at u. up the drain as it meanders to  
a poplar on the same at V. Thence N 46 1/2 W 49 poles to a  
Spanish oak on Horatia Wina at X. W. Thence S 26 W. 30 poles to  
a Red oak on ditto at Y. S 69 W 108 poles to Lunenburg line  
Thence a long said line S 3 E 204 poles to a black Jack corner on  
the Power line at N. Thence the Power line to the beginning.

107 Acres at the South end of said tract, mostly of  
which in Brunswick County, and bounded as follows Viz.

Beginning at white oak corner at P. Thence S 29 W. 40 poles to  
corner gum at y in Theophelus Deulow line, thence S 9 E to fall  
down corner at z 48 poles, thence N 78 W 6 1/2 poles to a black Jack at  
J. Thence S 12 E 106 poles to a small Red oak bush in Single  
-tons Estates line at 1. Thence S 8 E 7 poles to a corner Red oak  
at 2. on Brunswick line thence N 3 E 30 poles to a pine at 3.  
on Robert Mays line. Thence S 76 E 23 poles to fall down  
corner on ditto at 4. Thence N 20 E 32 poles to a bend in  
the line at 5. Thence N 44 E 192 poles to corner at 6. Thence  
N 35 1/2 E 26 poles to corner at 7. Thence S 7. 6 1/2 poles to  
Thomps corner pine at P. Thence the Power line to P. which  
is at the beginning.